

Frey Lumber Company Log Spec. Sheet

Log Yard Hours: Tuesday-Friday 7AM to 4:30PM. Saturday, Sunday and Monday by appointment only.
Payment: Cutoff time is Thursday at 3 PM with checks being sent out on Tuesday.

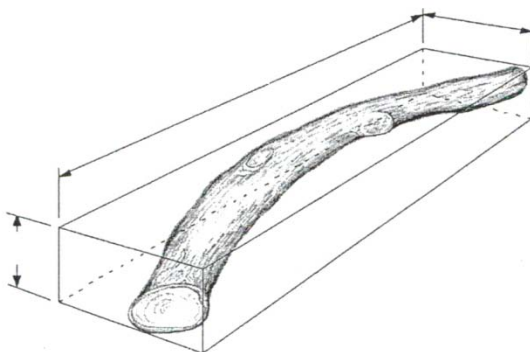
Acceptable Species:

- All Hardwoods. Conifers are allowed, no more than one tree per load.

Lengths: Any length between 3 ' to 48'. Lengths 3'-5' can only have a maximum diameter of 20" on the large end. Anything larger will have a deduction of \$100 for splitting.

Diameters: 8" minimum (inside bark) on the small end
30" maximum (inside bark). Diameters larger than 30" will have a deduction of \$100 for splitting.

Acceptable Sweep: 1" per running foot, however all logs must fit within a coffin measuring 48' long, 5' wide and 2' high.



Crook or S's: Acceptable if the "offset" is less than the diameter of the log where the crook occurs, minimum of 5' between crooks.

Limbing: Limbs must be trimmed close to the trunk. No Forks sticking out past the side of the logs.

Hollow: NO HOLES LARGER THAN A SNUFF CAN (2 1/2") are permitted. Split logs ARE permitted. NO rotten logs. No shake. No forks.

Fire Damage: Acceptable as long as the trees are still green and solid through.

Other Specs: No beaver tails less than 8" thick.

No imbedded metal, fencing or visible metal (means metal in log)

No Blue Color in Butt of Log

Please note the maximum lengths and diameters are absolutely critical and will be strictly enforced.

Any questions, call me at (724) 564-1888

**Thanks,
Jim**